



ARCHITECTURAL
TECHNOLOGIES

RÖDER_BUSINESS

PREFABRICATED BUILDINGS
FOR PERMANENT INSTALLATION
AND YEAR-ROUND OPERATION





Modern business buildings are quickly installed on the basis of RÖDER structures.

Light RÖDER constructions are used as aircraft hangars, repair shelters and airport terminals, warehouse and production premises, sport facilities, for logistics, retail and construction purposes.

Our structures don't require deep foundations and significant expenses for maintenance.

The structures are protected from corrosion and are very reliable, allowing their utilization for a long period of time, just like permanent buildings.

We provide internal lighting of the structures with necessary equipment, as well as engineering systems connection, so the functionality of quickly erectable RÖDER structures matches the functionality of permanent buildings.

◀ Hangar for A320/B737 aircraft types.
Dimensions 50x50x9 (18 in the ridge) m.
Three-section lifting gate.
Vladivostok, 2020

STRUCTURES APPLICATION



- Passenger and cargo airport terminals
- Aircraft hangars
- Repair and maintenance hangars and shelters
- Warehouses and logistics terminals
- Production buildings and workshops
- Shelters for civil construction
- Agroindustry structures
- Rescue service stations



- Administrative and office complexes
- Temporary and permanent residential complexes
- Hospital and laboratory buildings
- Construction camps
- Pioneer camps
- Community camps, field camps



- Stores, markets, fairs, sales outlets
- Restaurants, dining rooms, cafes, food-courts
- Exhibition pavilions, cash desks
- Auto dealers, garages, service centers



- Health and fitness complexes, multi-functional gyms
- Ice-hockey and skating rinks, curling
- Tennis and football courts
- Pool shelters

DURABILITY

RÖDER structures are called temporary, but their actual operation lasts dozens of years. The aluminum frame protected from corrosion, premium quality wall envelopes and double PVC thermal roofing make these buildings into a durable and very cost effective alternative to permanent buildings.

MATERIAL

- The frame is made of high strength extruded aluminum alloy
- Connection details of galvanized steel
- PVC thermal roofing
- Wall envelopes — sandwich panels



FRANKEN BRUNNEN warehouse complex — over 8 years of operational use



TENNIS PARK tennis court, Rostov-on-Don — over 9 years of operational use



FRIPA warehouse, Germany — over 17 years of operational use



Baggage claim hall in Maloye Savino Airport, Perm — over 7 years of operational use



Production complex of PSMA Rus LLC plant, Kaluga — over 8 years of operational use

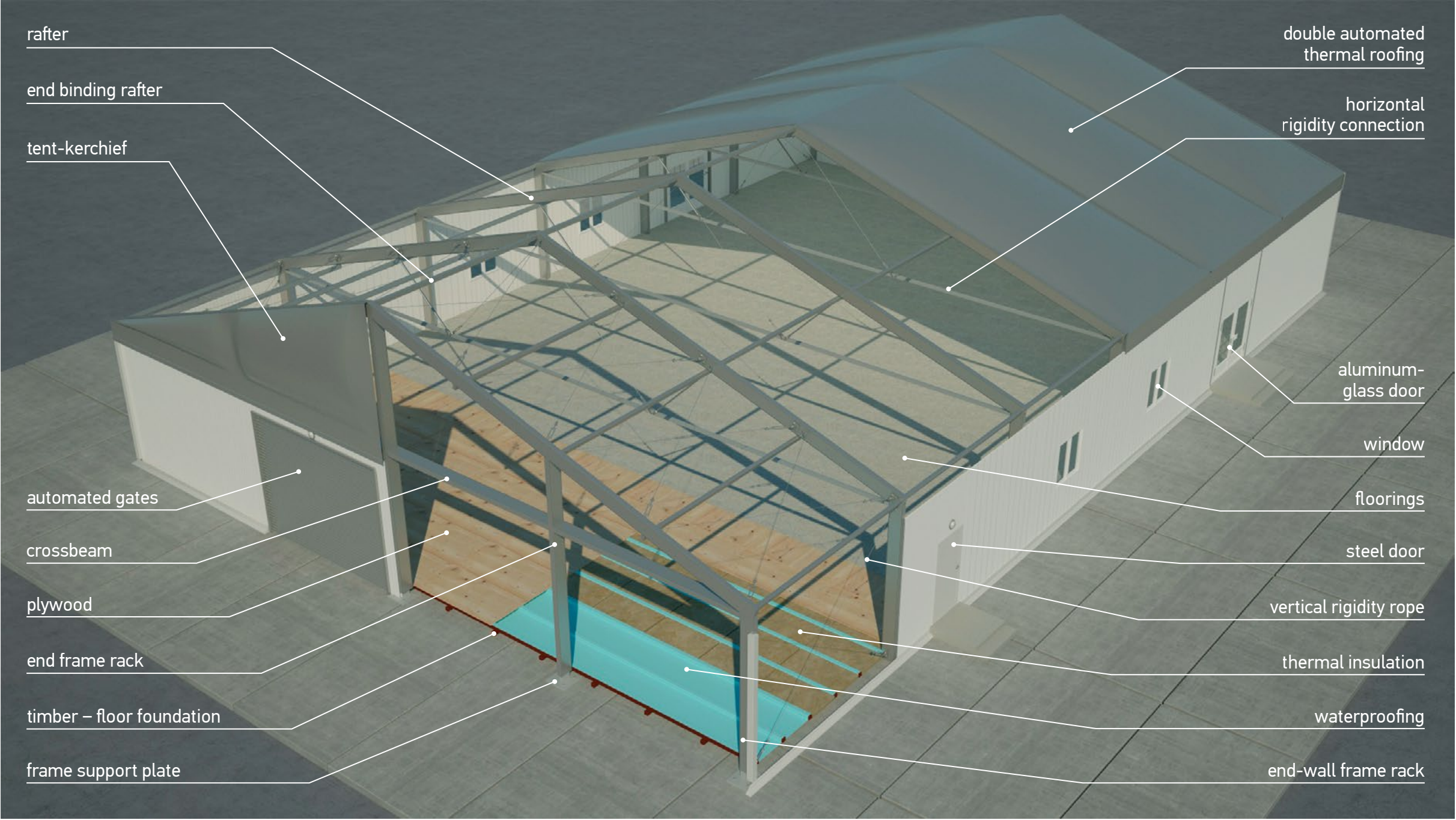
ADVANTAGES OF RÖDER CONSTRUCTIONS FOR BUSINESS

- Quick deployment of the facility and project launch
- Quick payback and shortened terms of investment returns
- Construction permit is not required
- Deep foundation not required
- Multi-functional solutions
- Transformation for different purposes
- Modular solutions with ability to separate parts of the structures
- Quick installation, dismantling and transportation
- Quick resource, area and power redistribution

RÖDER H-LINE STRUCTURAL ELEMENTS

RÖDER H-LINE buildings feature increased strength and are the best fit for permanent facilities — passenger terminals, residential and administrative buildings, markets, stores, warehouses, workshops, hospitals and laboratory, training centers and sports facilities. The facilities feature great microclimate and high cost efficiency due to double thermal roofing and 100–150 mm sandwich panels. In winter time, the snow does not accumulate at the thermal roofing due to its shape and coating. However, the projected snow load is around 120 kg/m².

Width of span, m (5 m step)	10 - 40
Length (5 m step)	unlimited
Wall height, m	4.20 5.20 6.20 9.20



BUILDING OUTFIT

Providing the facilities with necessary equipment and connecting them with engineering systems ensures that the functionality of quickly erectable RÖDER structures matches the functionality of permanent buildings.

- Main architectural systems of the building:
- facade and wall systems
 - thermal roofing and single PVC roofing
 - windows, doors and hangar gates
 - stairways, ramps
 - scenes, catwalks, stands
 - canopies, drainages, jamb panels
 - various floors
 - embedded rooms
 - decoration systems
 - lightning protection systems

- Quickly erectable RÖDER structures are equipped with engineering systems:
- power and lighting systems
 - climatic and ventilation equipment
 - water supply and drainage
 - sanitary modules or rooms
 - fire safety and access control systems
 - informational infrastructure
 - stage lighting and sound



Ice arena, court, health and fitness complex

Warehouse, workshop, cargo-terminal



Airport terminal



Market, store, fair



RÖDER TECHNICAL SOLUTIONS



Double thermal roofing

Automated snow clearing, thermal insulation, light structure due to PVC-sheets, 18° tilt – energy efficiency of the building.



Technologies without foundations

In cities, mountains, on sand and even on water, RÖDER structures may be installed on any surface without damaging it.



Bolted connection

No need for welding, all details are firmly assembled with bolts. Easy to assemble like a process construction set.



Keder channel

Special profile channel allows for quick installation and dismantling of PVC roofing and provides secure and hermetically sealed fixation.



Various wall materials

Glass, aluminum, plastic, PVC or sandwich panel walls are available.



Professional lighting systems

Bearing capacity of RÖDER profile allows installation of 250 kg lighting equipment, or 20 kg per frame running meter. In some cases the workload may be increased up to 800 kg.



External decorating systems

Premium structure range may be equipped with ALEA | ATTIKA external decorating systems.

PRODUCTION

Quick and easily scalable solution for industrial complexes – this is what RÖDER H-LINE structures with strengthened profile present. The structures are capable of withstanding high snow and wind loads. 10 to 50 m wide constructions are available, with no length limitations.

Production complex of PSMA Rus LLC plant PSA Peugeot- Citroën- Mitsubishi

Location:
ROSLA industrial park, Kaluga region

Dimensions:
30x90x6, 30x140x6, 40x110x6, 30x50x6 m

Construction purposes:
extension of warehouse and production areas

Commissioning date:
2012-2015 in two stages



Long-term lease of warehouse complex since 2012.
Full operational maintenance.

12800 m²
area of structures

H-LINE
structure type

AIRPORT

RÖDER solutions for airport infrastructure established themselves very well in biggest international and Russian airports. All tent-frame constructions are quickly erectable, designed for long-term operational use and do not require preparation of construction site or foundation.

If necessary, the engineering equipment, installed in RÖDER structures, may be integrated with the existing systems of permanent buildings.

The structures are easy to transport, change their dimensions quickly due to modularity, which is especially important for airport infrastructure adaptation to seasonal fluctuations of passenger flow.



Grabtsevo Airport
IAL terminal

Location:
Kaluga

Dimensions:
40x60x4 m

Construction purposes:
increasing airport
throughput capacity

Commissioning date:
May 2018

Unique compact airport
international terminal with
40x60 m dimensions.

All service and client rooms
are located in one small
building.

2400 m²
area of structures

H-LINE
structure type

HANGAR

Light aluminum RÖDER structures allow to create wide single span temporary buildings, which serve perfectly as hangars, warehouses and large workshops. Building max width – 50-60 m. This is enough for aircraft hangars or shelters for large vehicles, where main-tenance and repairs are carried out. Double thermal roofing with active snow clearing allows hangar operational use in both snowy and hot regions. Strong aluminum alloy frame withstands high wind loads.



Aircraft hangar

Location:
Vladivostok

Dimensions:
50x50x9,2 m

Construction purposes:
maintenance and repair hangar
for A320 / B737 aircraft types

Commissioning date:
September 2020

Three-section lifting gates, double thermal roofing, sandwich panel wall envelopes, lighting systems

18_m
ridge height

2500_{m²}
facility area

H-LINE_{hybrid}
structure type

The outstanding benefit of RÖDER hangars is their quick installation without any foundation on asphalt surface or concrete slabs.

The structures withstand multiple installations, dismantling and transportations.

They may be easily added or transformed, if the customer's requirements change.

OFFICE BUILDING

Due to the use of tent-frame RÖDER structures, multi-functional administrative buildings and companies offices may be erected in shortest terms We will design and construct a modern building with a complex of engineering systems and equipment allowing for comfortable stay of the staff.

Quickly erectable RÖDER structures allow to develop internal space for any purpose within short terms.



One of a kind complex of temporary facilities for multi-functional labor migration center.



Mobile multi-functional labor migration center

Location:
Sakharovo, New Moscow

Dimensions:
20x55, 40x85, 30x85, 15x60 m

Construction purposes:
temporary multi-functional center for the period of permanent building construction

Commissioning date:
January 2015

10000 m²
area of structures

H-LINE
structure type

MARKET RETAIL FAIR

RÖDER pavilions are perfect for agricultural exhibitions or retail-facilities of different scale due to energy efficient construction technologies and quick construction installation and dismantling.

Design and manufacturing of tent-frame structures are carried out only after a scrutinized study of customer's request. We offer turnkey solutions, which may include, among other options, installation of special commercial equipment.



Temporary markets and fairs may be fitted comfortably into urban areas.

Year-round operational use, full engineering equipment.

BUILT BY RÖDER

Grocery fairs

Location:
Grocery fairs complex, Moscow

Dimensions:
15x60x4 m

Construction purposes:
quick expansion of trading areas

Commissioning date:
May 2016

4900 m²
area of structures

B-TENT
structure type

SHOW-ROOM

RÖDER offers multiple additional options and equipment for all types of mobile structures: various facade systems, floors, stairways, balconies, doors, lighting and climatic systems, exterior and interior decorating, additional customization options. Use of RÖDER structures as exhibition show-pavilion proves its economic efficiency.



Mercedes Benz show-room

Location:
Veshki village, Moscow region

Dimensions:
10x5x3 m

Construction purposes:
new car model presentation,
exhibition pavilion

Commissioning date:
July 2017

50 m²
area of structures

SOLUTION
structure type

Pavilions for most eye-catching events.

Premium stores and show-rooms.



HOSPITAL

Quickly erectable RÖDER structures are equipped according to customized requirements and serve well as mobile and protected buildings in emergency cases, when universal and safe buildings with shortest installation cycle are needed.

We offer light structures for medical facilities, hospitals, laboratories, fully functional turnkey hospital premises, modular camps. The facilities provide comfortable accommodation due to climate systems, insulated roofs and walls, as well as roofing withstanding the tested snow load. You receive ready-made solution from one supplier from one warehouse in the Moscow region.

Quickly erectable hospital complex

Location:
Moscow and New Moscow,
17 construction points in total

Dimensions:
40x60x4, 20x40x4 m

Construction purposes:
quick increase of hospital
and bed capacities

Commissioning date:
May-July 2020, six phases

**Comfort and medical
equipment matching
the level of permanent
hospitals.**



**Quickly erectable
hospitals with 70–80 beds,
laboratories, first aid
stations.**



57000 m²
area of structures

H-LINE
structure type

ICE ARENA

RÖDER structures are easy to install and they withstand multiple installations and dismantling without losing its operation properties and quality. This allows for inheritance of the facility, changing its functionality if required. For example, after 2019 Universiade in Krasnoyarsk, the biggest structure with 40x80 m dimensions was transferred to the School of Olympic reserve for use as curling arena at another location.

Ice arenas with 26x58 m ice field

Location: Moscow
Dimensions: 32x74x5,2 m

Construction purposes: quick erection of ice arenas for year-round operational use

Commissioning date: February 2019, November 2019

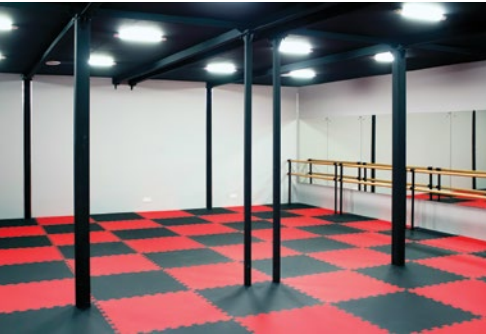
Two locker rooms for each team, showers, lavatories, administrative premises at the second floor. Stands, boards, glazing. Video surveillance, ventilation, conditioning, lighting, fire and security alarms, access control system.

2400 m² area of structures
700 m² administrative building

H-LINE structure type

RÖDER B-TENT structure was transported to Simferopol after Ilia Averbukh’s 2019 tour in Yalta, now it is an ice rink.

Ice arena project of «SportTech» fund was very successful and comfortable in operational use, thus the fund asked RÖDER to construct another similar arena in 2019.



Ice arenas for hockey, skating, curling and ice shows.

Permanent and temporary.

Fully equipped.

Facility may be transported to a new location.

Quick erection, great microclimate



«Romeo and Juliet» Ice Show

Location: Yalta
Dimensions: 40x60x6,2 m

Area of ice field: 20x38 m

Commissioning date: September 2019

7 m high professional decorations, auditorium for 1,500 people, theatrical lighting and sound. Summer cafe, cash register modules, modules for service personnel. Video surveillance, ventilation, conditioning, fire and security alarms.

2400 m² area of structures
B-TENT structure type



**FAST AND
DURABILITY**

Over 30 years
of operation

**Roder LLC is a Russian company and an important part
of RÖDER group**



Moscow region,
Solnechnogorsk Urban District,
Lunevo Settlement, Industrial Zone 1

+7 (495) 785 8157
roder@roder.ru
sales@roder.ru

 [Roder.Russia](#)
 [@roder_russia](#)
www.roder.ru